

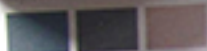
APRIL 2013



TOAST



...shoulders
...sleeves, vertical
...at front and back
...neck
...pockets, hand wash or
dry clean.



Italian turtl, grey melange, pearl
sleeve S, M, L, length 25.5"
C.A. 119 - 4135

coloured slim leg jean

front, five pockets, full length jeans
elbow knee patch up with a slim
tapered leg and hem with a raw
edge of denim with 2% stretch
and machine wash.



multi grey, orange red, indigo blue
size S - XL, hem circ. 32"
length 31" (S - 32.5") - 33"
length 31" (S - 32.5") - 33"

denim shirt

silk fabric 33.5x36" - 43.5x49.5"
silk fabric 32.5x31.5" - 43.5"
hem waist 30x32"

